

# New Features in ARCHline.XP 2009

## DirectX

The ARCHLine.XP® 2009 put the appearance of drawing and 3D contents on different technological bases. This new technology is the Microsoft DirectX. The DirectX is such a driver for computers running Microsoft Windows operating systems, that you can also use for the accelerating methods offered by the hardware. With help of DirectX the ARCHLine.XP® can use efficiently the ability of the video card, which is the most important device in the appearance.



Due to this you have a chance to handle larger and more complicated plans and other drawings or models, in such way, that the processor responsible for general calculations gets a little or not at all gets load. It is very useful because the work will be easier as the video card makes the representation, which is very hard work in many cases.

When you start ARCHLine.XP® 2009, it recognizes automatically the ability of the graphic card and arranges the work for it. If the video card can do it, the hardware-accelerated appearance will be default automatically with the help of DirectX technology. On older computers the program changes to a slower hardware not accelerated display method.

Shaded

Shaded (with wireframe)



Textured



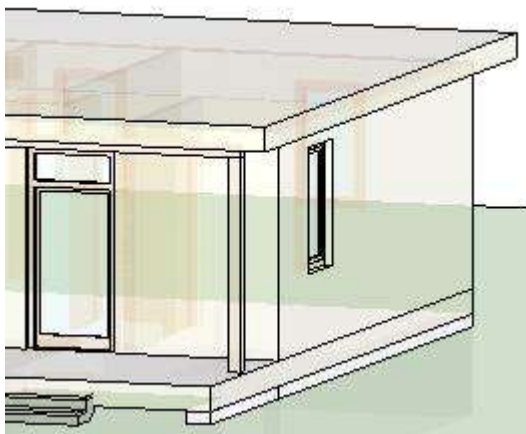
Textured (with wireframe)





X-Ray



Transparency



## Walk and fly

You can represent in higher quality the 3D content of your projects with the help of the View -  Walk and  Fly commands. This new function will help you, when you would like to show in real the different details of the model.

You can do it in that way, as you walk in the building in the reality. You can apply the commands excellently in course of work, because the different settings of perspective views and design are become simple.

You can edit the different open space border elements, as if you stand in the model and work on a virtual space.

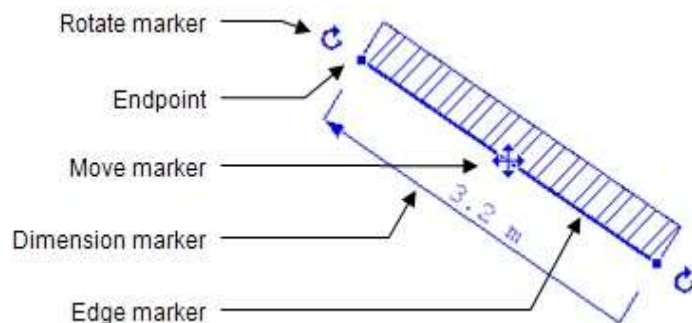
# Markers

ARCHLine.XP® markers are such interactive interface tools that help with modifying elements after their selection without using menus.

The main point of using ARCHLine.XP® markers is that it is very easy to handle them. Appearance of markers can be various depending on their aim. After indicating every drawing element special markers belonging to that element appear and with help of special markers frequent modifications can be completed quickly. Using markers, reduces time, increases design speed and can be learned easily.

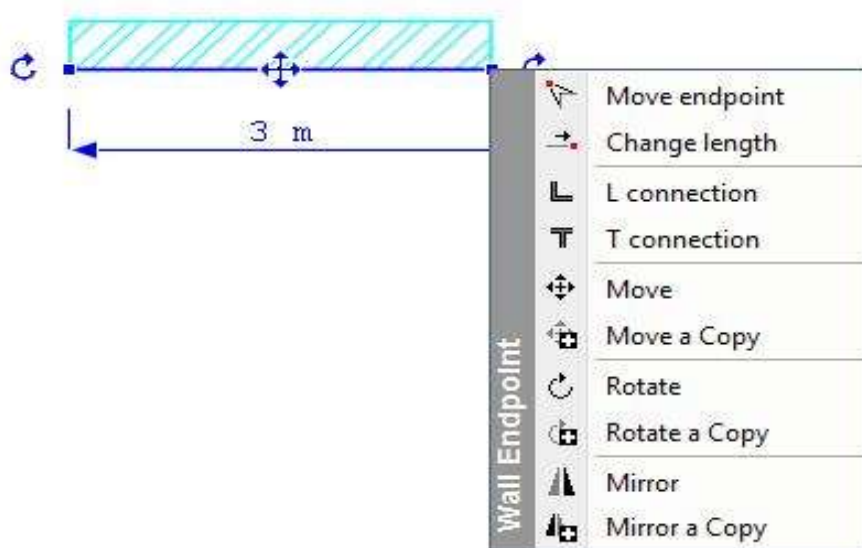
## Markers' operation

Markers appear when you select one or more elements.



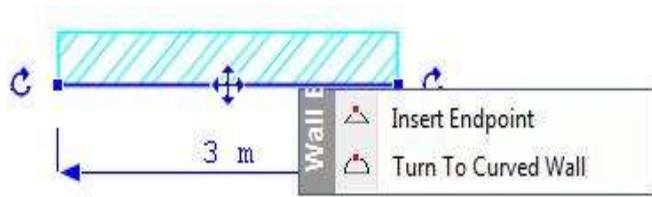
Clicking on a marker with left mouse button a menu appears where you can choose from possible commands:

## Example for endpoint:



## Example for edge marker:

It appears with clicking on the edge of the element:



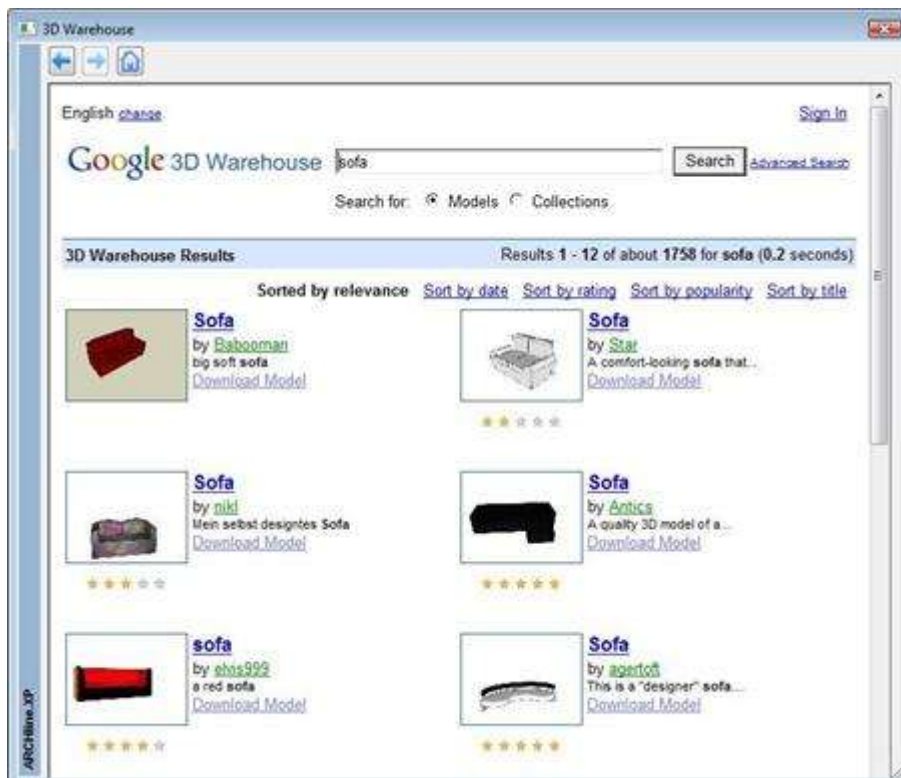
## 3D Warehouse

Google 3D Warehouse™ is a free Google service by which anyone can download and use web-published 3D models for free. 3D Warehouse™ is a continuously growing database of models which can be represented in the projects with different textures. There is a wide range of models, including buildings, furniture, cars, people and many other objects.

With the help of 3D Warehouse™ models it is easy to furnish a flat in your design project because you can download a lot of furniture models and furnish a virtual flat spectacularly as soon as you finished with the designing of walls, slabs, doors and windows, stairs etc.

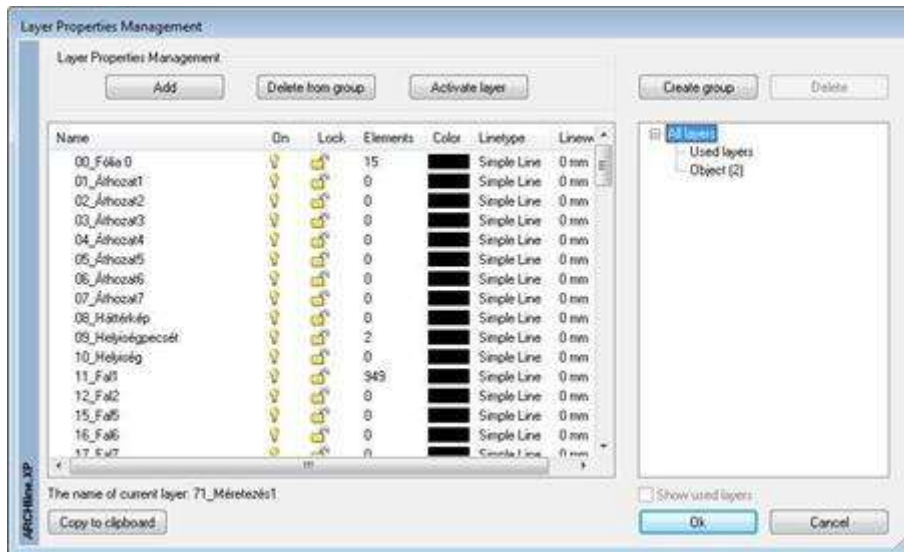
ARCHLine.XP® is integrated with Google 3D Warehouse™ web portal. This integration means that the selected model can be inserted directly into an ARCHLine.XP® project and ARCHLine.XP® object library.

The 3D Warehouse command pops up a browser window that is connected directly through the internet to the Google 3D Warehouse web portal.



## Layer groups

Lehetőség van a fóliák csoportokba rendezésére és az egy csoportba tartozó fóliák együttes kezelésére.



### Example:

In the following example it is a really great help using the layers group:

- Start a new project.
- Load in a DWG file, which contains more than 30 layers.
- Create a new layer group: DWG layers.
- Click on the right side on the Used layers group. Then on the left side only the layers imported from dwg drawing and the used layers can be found.
- Move all layers from here to the DWG layers group.
- Start design.
- If the imported elements from dwg drawing are not needed, you can switch off or lock them in one step.

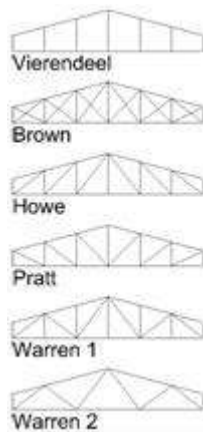
## Truss

In the Toolbox in the Structural elements folder there is a new element, the Truss.



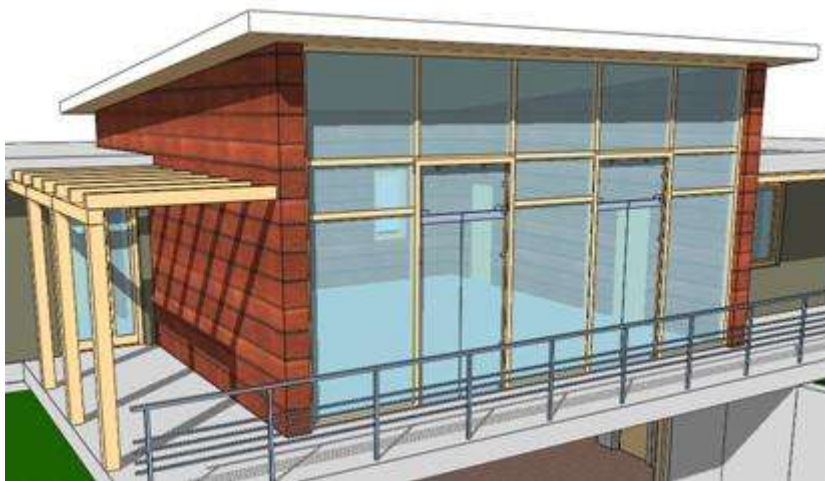
You can create simple truss beam-structures with truss.

You can select the following types: Vierendeel, Brown, Howe, Pratt, Warren 1, Warren 2.

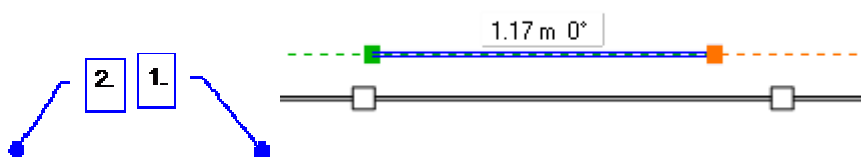


## Openings in the Curtain wall

You can easily prepare complex glazed structures, curtain walls. After preparing the main structure elements you can fit without restriction openings to the curtain wall fitting to the structure elements.



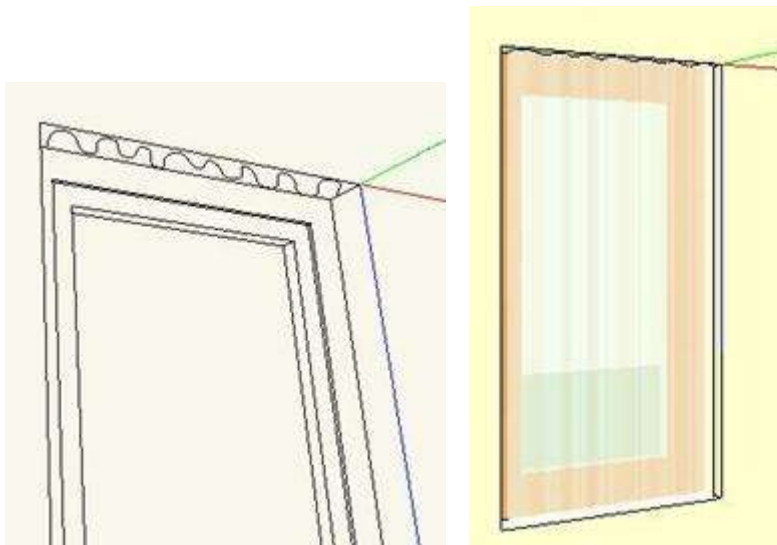
First prepare the curtain wall, and set the position of the main structure elements. After setting place the division ribs, you can also set the openings fitted to these ribs in the floor plane. Select from the Toolbox the Door - Window by two points command, then click on the proper points of the border ribs of the future opening.



If the external contour of the opening is modified as the result of fitting in the opening the reveal structure of the curtain wall follows these changes.

### **3D extension of line nature elements**

There is a possibility to create line nature elements designed in the 3D window into 3D form. You can create necessary simple models in the conception planning phase fast and easily, what's more this method can be used well for creating surface nature elements necessary to the detailed spectacle plans.



### **Extension of DWG import**

The AutoCAD© DWG files can contain 3D surfaces, which are created by drawing out lines, arches, and polygons in 3D, by determining the so-called Thickness of the elements. You can also create such surfaces in the ARCHline.XP© 2009 (see in 3D extension of line nature elements chapter), and the program can import the AutoCAD© DWG files containing

these elements.

## **Design Center**

The ARCHLine.XP® 2009 Design Center gives a more flexible and simple way to handle its content.

There is no need to use the Management of object libraries, because we can reach all function directly in the Design Center, what's more it gives a wider range of possibilities owing to the development.

You can generally use the Drag and drop method in the Design Center, from this time not only in placing elements, but at their systematization as well, for example in case of copy and move.

## **Drawing recovery manager**

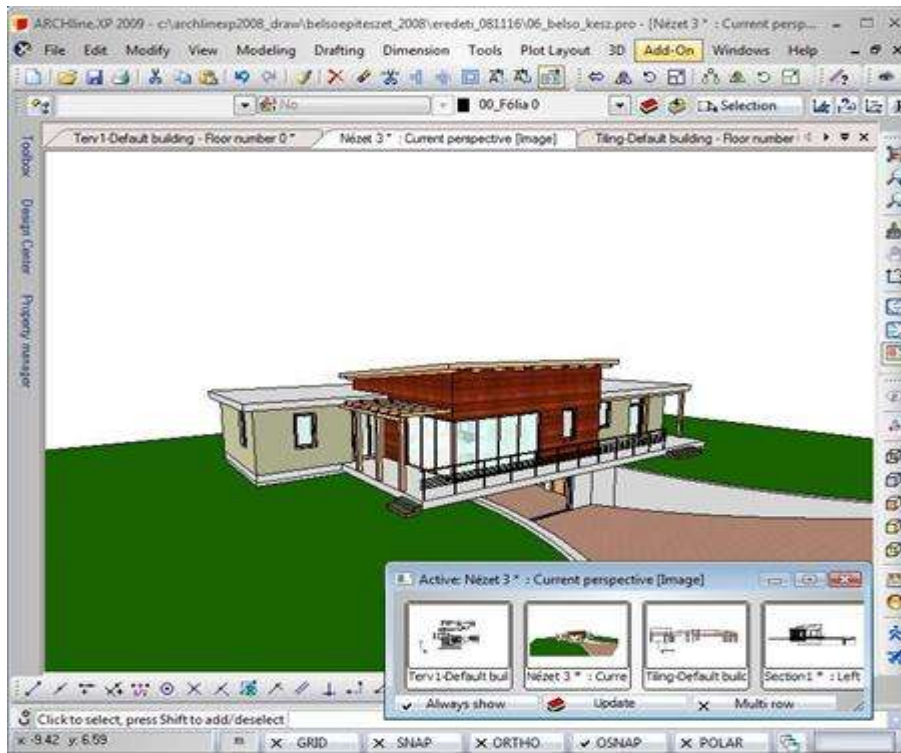
The ARCHLine.XP 2009 gives an efficient helping hand to recover former projects and drawings of these projects on the hard disks of the computer.

You can use it simply, just determine the search position and condition then you just have to select the proper one from the found projects or drawings.

This function can be used excellently for searching former used works or their backup copies. It shows the preview of the selected drawing from project contents list in miniature form.

## **Quick View Toolbar**

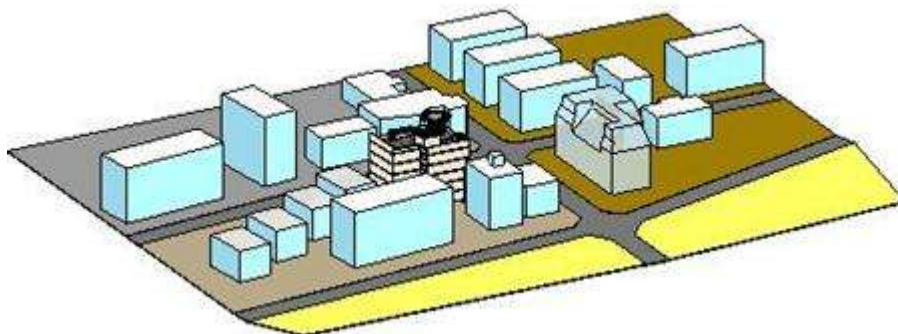
In the ARCHLine.XP® 2009 version you can easily and simply look over the drawings in the project owing to the quick view toolbar. Besides you can change between the drawings.



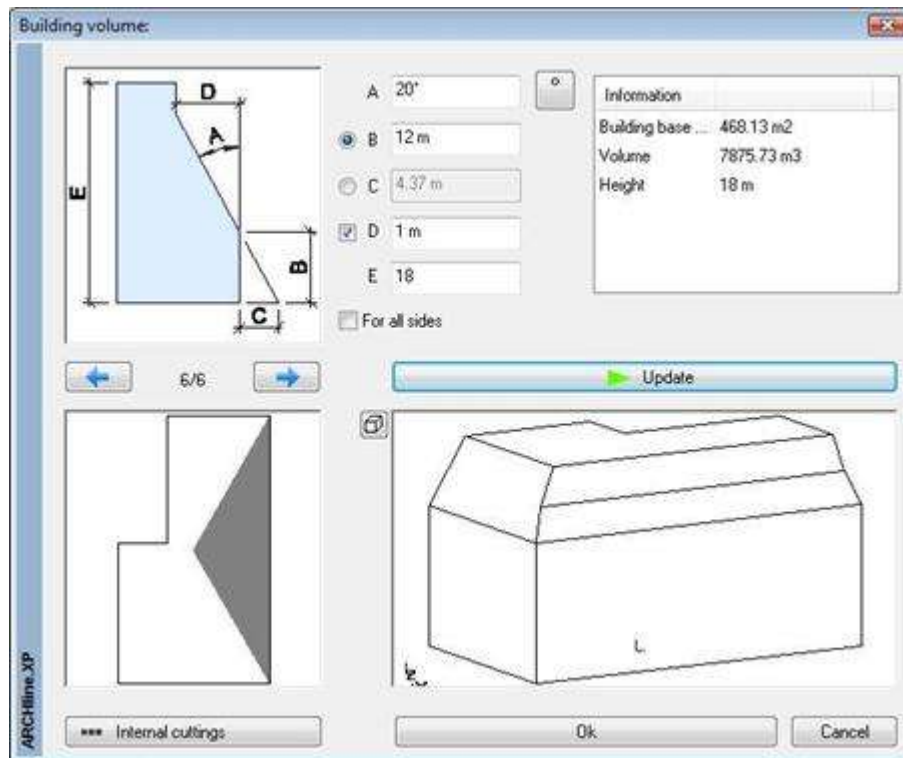
## Building volume control

In ARCHLine.XP® 2009 there is a possibility to determine the volume of the building in visual form. In big densely populated towns with thick built-up areas it is important to maximize the volume of the building according to the regulations.

In ARCHLine.XP® 2009 you can determine the biggest floor space available for the building, on the base of this the biggest volume, which is suitable for the local building up regulations ( like maximum height and solar access) can be determined in a simple way.



In the Building volume dialog window you can detail the rule system referring to the surfaces border the building volume control.



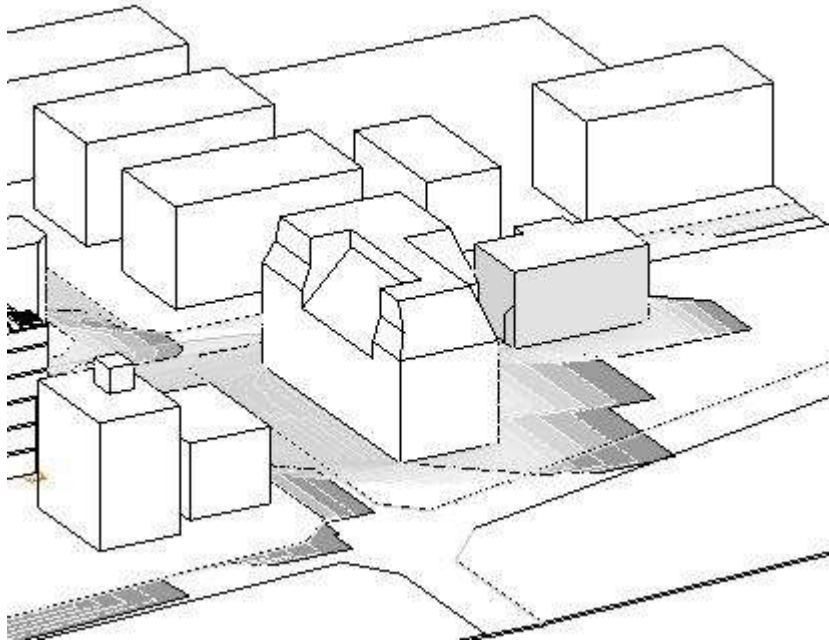
## Solar access protection

The ARCHLine.XP® 2009 provides a great opportunity to survey the solar access of the building or its rooms. The advantage of the function is that it is prepared in clear graphical form, which is easy to survey and with its help we can support the proper solar access of the designed building's room.

In case of not proper solar access (because of the parameters of the building or the place), you can make a decision easily about modifications according to the prepared model.

Further advantage is that you can use the Solar access in any phase of designing. So you can prepare the building with equal efficiency on the volume model, on the sketch plan or on the

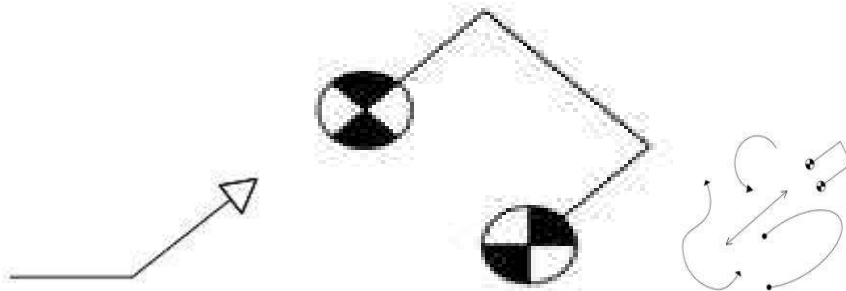
authorization plan and on the working draw.



## Symbol at line end points

With ARCHLine.XP® 2009 it is possible to place symbols at end points of certain types of elements. Symbols can be placed at end points of the following element types:

- Line
- Polyline
- Arc
- Elliptic arc
- Spline



## Replacing of groups

ARCHLine.XP® 2009 makes the replacement of 2D groups found in projects easier and more effective. With the replacement of identical elements it is possible to replace groups identical with the selected one with another one.

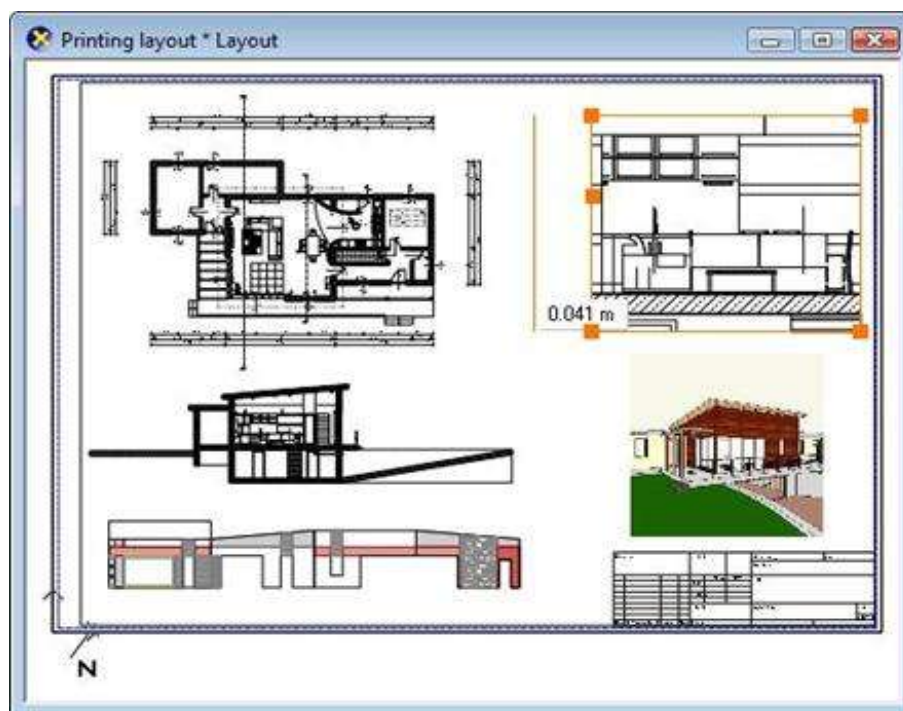
During the design work it can easily happen that you need the replacement of the previously

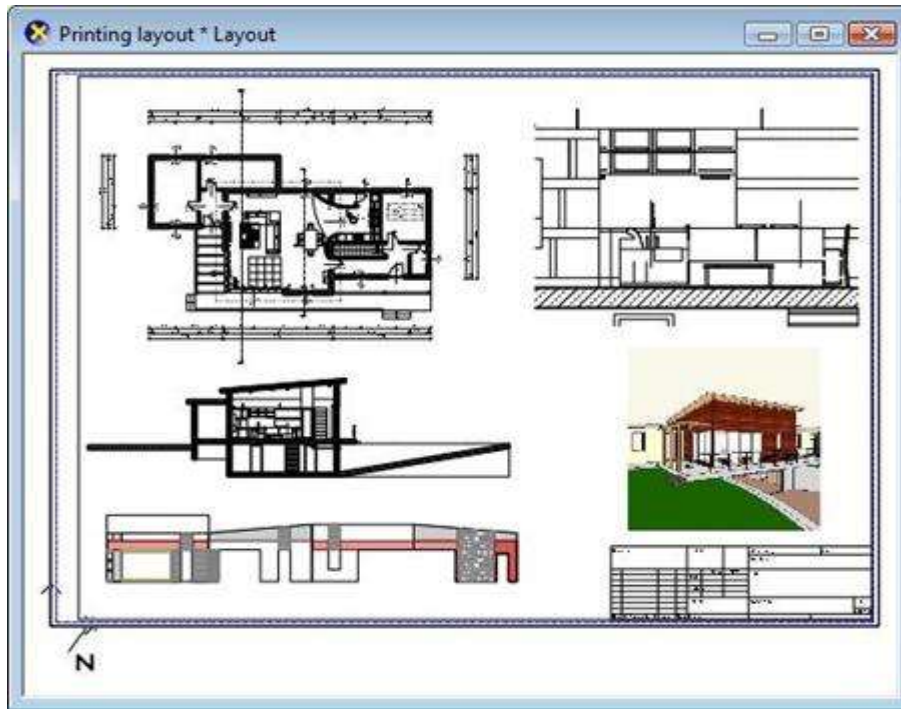
designed furniture elements of a bathroom or a living room. In that case the Replace group function gives you an effective help.

## Plot layout developments

The plot layout developments made in ARCHLine.XP® 2009 ensures more comfortable and flexible editing when you place drawing parts with different scale.

After paste it is possible to edit the boundary of the drawing parts. During the design work you may need to extend a previously placed drawing part; or to the contrary, you should cut it. This situation can be handled easier by the new plot layout functions.





## Picture on wall

With the Picture on wall function of ARCHLine.XP® 2009 it is easy to put pictures on different surfaces of interior spaces.

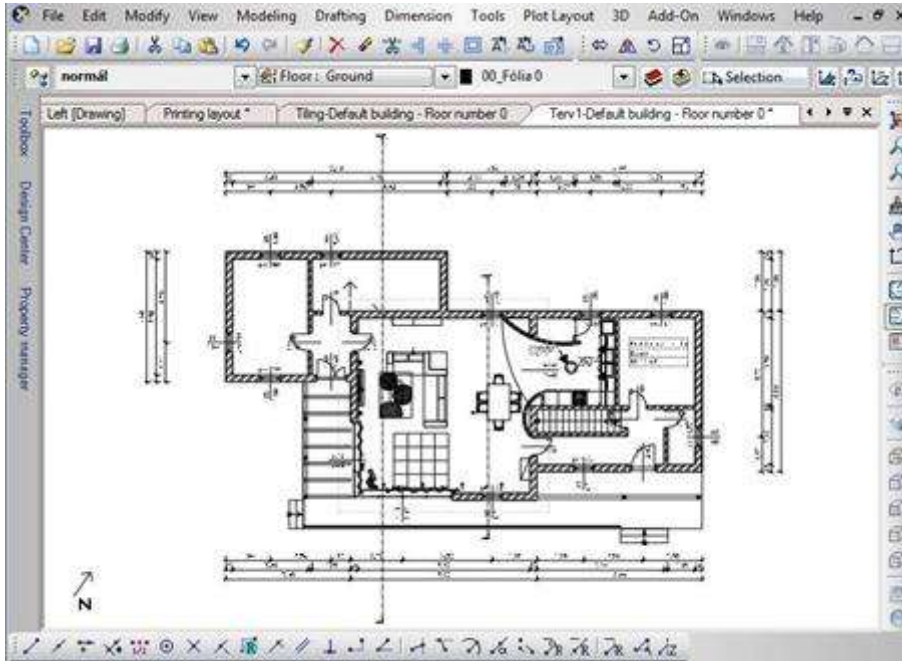
The Picture on wall is a dynamic object that can be configured with its parameters in a few steps. The Picture on wall is always based on an image which is supplemented with a frame and paspartou. After that, it can be placed on a selected surface.



# Others

## Window selection tabs

In ARCHLine.XP® 2009 the window selection tabs help the better overview and easier handling of windows in the project.



## Switching the reference line of walls

Wall is placed along its reference line on the left, right or in the middle. Reference lines on the left or right can be exchanged.

The command exchanges the reference line of the wall without changing the position of the wall.

